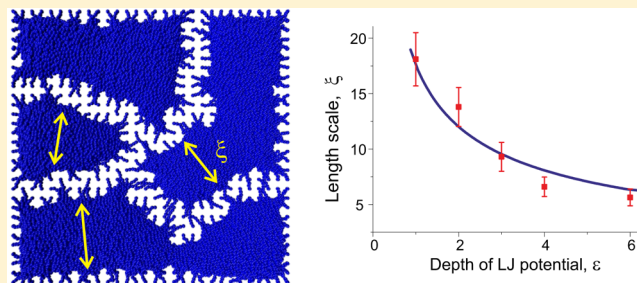


Arrested Spinodal Decomposition in Polymer Brush Collapsing in Poor Solvent

Anna Lappala, Saahil Mendiratta, and Eugene M. Terentjev*

Cavendish Laboratory, University of Cambridge, JJ Thomson Avenue, Cambridge CB3 0HE, U.K.

ABSTRACT: We study the Brownian dynamics of flexible and semiflexible polymer chains densely grafted on a flat substrate upon rapid quenching of the system when the quality of solvent becomes poor and chains attempt collapse into a globular state. The collapse process of such a polymer brush differs from individual chains, both in its kinetics and its structural morphology. We find that the resulting collapsed brush does not form a homogeneous dense layer, in spite of all chain monomers equally attracting each other via a model Lennard-Jones potential. Instead, a very distinct inhomogeneous density distribution in the plane forms, with a characteristic length scale dependent on the quenching depth (or, equivalently, the strength of monomer attraction) and the geometric parameters of the brush. This structure is identical to the spinodal-decomposition structure; however, due to the grafting constraint we find no subsequent coarsening: the established random bundling with characteristic periodicity remains as the apparently equilibrium structure. We compare this finding with a recent field-theoretical model of bundling in a semiflexible polymer brush.



INTRODUCTION

The theoretical problem of polymer chain collapse in poor solvents has received much attention over the past decades, from both analytic^{1–5} and numerical approaches.^{6,7} This generic collapse, often called the “coil–globule transition”, is well-understood as a local version of the polymer demixing Flory has originally formulated for polymer solutions.⁸ The coil–globule transition is closely associated with the initial stages of protein folding.⁹ Collapse takes place as a result of effective pair interaction between chain monomers becoming attractive, e.g., due to changing solvent quality. Recent studies of the collapse dynamics have shown that it is a nontrivial kinetic process, with competing interactions leading to inhomogeneous intermediate structures forming and persisting on the way to the final globular state.^{10–12}

In this work, we look at the collective behavior of several chains in a confined configuration known as “polymer brush”.^{13,14} By definition, a polymer brush is a layer of polymers attached with one end to a surface at a sufficiently high grafting density (i.e., a sufficiently close distance between individual polymer chains). In practice, the attachment can take place via a covalent bond, a specific ligand, physical adsorption, or self-assembly. In our simulations, the chains have their first monomer fixed on a flat surface, resulting in a constant grafting density throughout the simulation. Chains themselves can vary in length, composition, and individual properties, from very primitive ideal chains to complex models incorporating block copolymers, electric charge, and hydrodynamics. The subclass of charged (polyelectrolyte) brushes is even more interesting in biological context. There are numerous examples of polymer brushes in biological systems such as protein micelles, planar

brushes of polysaccharides, cylindrical polymer brushes in microtubules, and neurofilaments. In terms of useful physical, chemical, and biomedical applications, brushes can be used to stabilize colloids, lubricate surfaces, deliver drugs by biodegradable micelles, in DNA microarrays for diagnostic analysis of mutations, and to reduce friction in artificial joints, to name but a few.¹⁵ Here we study a simple, planar brush of self-avoiding bead-and-spring polymer chains without additional electrostatic interactions or hydrodynamics, which makes the analysis tractable and comparable with well-established theories—but we also examine the case of chains with a long persistence length as a crude attempt to account for polyelectrolyte stiffening. The simple picture of polymer brushes may serve as the basis for models in diverse interfacial systems in biophysics and polymer science, such as polymeric surfactants, stabilized suspensions of colloid particles, and many structures formed by block copolymers. Note that there are classical papers in the literature describing molecular dynamics of polymer brush and its evolution with grafting density¹⁶ as well as experimentally determine its characteristics.^{17,18} They generally find agreement in the key aspects with the classical theory of polymer brushes.^{19–21} However, in this paper our interest is different: instead of looking at the structure of an extended polymer brush in good solvent, we investigate the case of poor solvent when the effective attractive (nonspecific) interaction between segments causes chain collapse into a dense globular state.

Received: September 26, 2014

Revised: February 24, 2015

Published: March 5, 2015

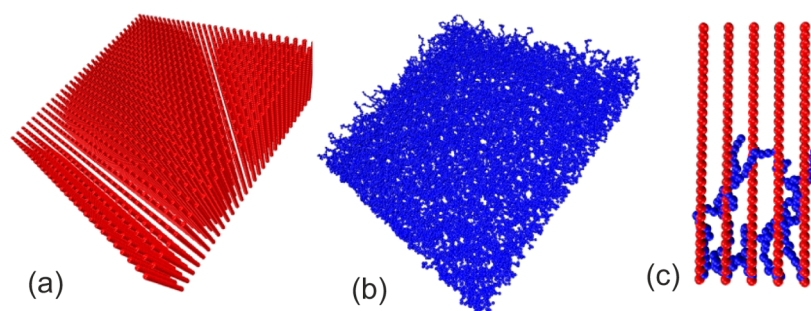


Figure 1. (a) Initial configuration of our simulation, illustrating the grafting structure and density. In this case, the grafting on the x - y plane was on a uniform square lattice with the spacing $a = 3\sigma$. (b) Equilibrated brush in a good solvent. (c) Comparison of the initial structure and the equilibrated coil in good solvent.

We carry out coarse-grained Brownian dynamics simulations of a collection of chains uniformly grafted to a flat repulsive surface to find their equilibrium swollen conformation and then follow their behavior after instant quenching. We use the parameters setup of Rosa and Everaers²² within the Large Scale Atomic/Molecular Massively Parallel Simulator (LAMMPS) package.²³ The initial structure of the polymer chains was configured to be linear, and the first step was to equilibrate the linear brush into a constricted coil structure in good solvent. Because of the high density of grafting, in a good solvent their individual conformation is quite stretched out, and we find a good agreement with classical results on the parabolic density profile.²⁰ The deviations from the parabolic profile, which have been shown to become progressively important as the length of the polymers or the grafting density decreases,²⁴ have not been significant in our case of grafted flexible chains—however, we found that the semiflexible chains deviate from the parabolic density very significantly. After equilibration, the solvent conditions were instantly switched to poor solvent, resulting in chains collapsed onto their flat substrate surface. Here we find an unexpected effect of spinodal decomposition in the plane of collapsing brush and study it quantitatively through local monomer density profile, potential energy, and characteristic length scale measurements as well as the kinetics of collapse. In all cases, we compared the behavior of flexible and semiflexible polymer brushes upon collapse over time.

Again, there is an important body of work on the structure of a brush collapsed in poor solvent;^{25–27} for instance, it is well-established that the collapse transition, which leads to phase separation in the bulk, is smeared out for the grafted layer and does not correspond to a true phase transition—however, the authors have not examined the lateral structure of the collapsed brush. The recent theory of Benetatos et al.²⁸ considered stiff and semiflexible chains in a brush configuration and predicted a bundling instability when an attractive interaction between monomers exceeds a critical value. In their work, Benetatos et al. found that there is a competition between permanent grafting favoring a homogeneous state of the polymer brush and the nonlocalized attraction, which tends to induce in-plane collapse of the aligned polymers, giving rise to an instability of the homogeneous phase to a bundled state. In the bundled state, the density in the plane is modulated by a length scale that depends on the strength of the attractive interaction.

Brownian dynamics simulations allowed us to follow the density evolution of brushes over time, as it evolves from the equilibrium parabolic profile in the swollen brush to the densely packed layer on the surface. The characteristic length scale of bundled regions in the collapsed brush appears to agree with

the theoretical prediction of the square root dependence of this length scale on the attractive potential well depth.²⁸

■ SIMULATION OF POLYMER BRUSH

The model used for numerical simulations in this work is based on the bead–spring model described in the molecular dynamics context by Kremer and Grest²⁹ and Plimpton.³⁰ We take an individual polymer chain composed of connected monomeric units consisting of $N = 30$ monomers, and 900 of these chains formed a brush on a 30×30 square lattice as shown in Figure 1. Interactions between monomers are described by the standard potentials: FENE for connected pairs of particles, bending elasticity by the angle formed between two consecutive bonds, and the Lennard-Jones (LJ) potential representing a longer range pair interaction between any two particles.

Model parameters were taken similar to the ones described earlier;¹² each monomer has an effective diameter of σ in reduced units, and the values of FENE bond potential constants were used as in Kremer and Grest.²⁹ We shall work at essentially the canonical ensemble with a fixed temperature of the thermostat set at $k_B T = 1$, which means that if we choose the characteristic energy scale in real units to be 2.5 kJ/mol, then the thermostat temperature will be 300 K. The actual temperature of the system measured from the average kinetic energy per degree of freedom will fluctuate around this value, controlled by the damping term and the random force term in the Langevin equation (which, in turn, are related by the fluctuation–dissipation theorem). In reduced (Lennard-Jones: LJ) units all our energy scales will be measured in units of this constant thermostat parameter $k_B T$. The particularly important parameter measuring the local bending modulus of the polymer chain, K_θ (giving the chain persistence length $l_p = \sigma K_\theta / k_B T$), was set to give $l_p = \sigma$ for a case of flexible chains and to $l_p = 8\sigma$ for a brush of semiflexible chains. The integration time step was chosen to be $\Delta t_{\text{int}} = 0.01\tau$, where $\tau = \sigma(m/k_B T)^{1/2}$ is the reduced (LJ) time.^{22,29} Taking appropriate values of σ and mass for a typical monomer, we obtain the estimate of $\tau \approx 1.96$ ps. Hence, with 10^7 time steps of this coarse-grained simulation we are able to follow the dynamics of a polymer brush for ~ 196 ns.

In good solvent the LJ potential was set to zero at $r_{\text{cutoff}} = 2^{1/6}\sigma$, retaining only the soft repulsion between monomers representing the excluded-volume interaction of such a polymer chain (in some literature this is called the Weeks–Chandler–Anderson excluded volume potential). In order to simulate poor solvent conditions when there is an effective attraction between monomers, the cutoff value was set to $r_{\text{cutoff}} = 3\sigma$, while retaining the same value of LJ ϵ . The corresponding depth of the attractive pair potential well represents the depth of

quenching: instead of changing the temperature as one is more familiar with in mean-field and scaling theories, we keep the temperature of the Brownian bath constant and change the strength of effective monomer attraction.

The initial geometry of the setup plays an important role in the physics of the simulated brush collapse, and therefore the parameters used to build a brush had to be chosen carefully. It is clear that with a very sparse grafting when the area per chain a^2 is greater than the area of chain gyration in good solvent $R_g^2 \sim \sigma^2 N^{6/5}$, the polymer chains are in the “mushroom” regime^{14,20} and their collapse in poor solvent will proceed individually, forming condensed “droplets” of floor area $\sim \sigma^2 N^{2/3} \ll a^2$ which are assured not to interact with their neighbors. We expect the interesting physics to emerge when the two length scales are comparable, and so the two competing effects²⁸ could produce a modulated structure. This happens when the area per chain is approximately equal to the area of the collapsed droplet, that is, grafting the chains a distance $a \approx \sigma N^{1/3}$ apart. For $N = 30$ this gives the spacing $a \approx 3\sigma$. When the chain length is so great that for a given grafting density the thickness of the collapsed dense polymer layer is large, we might still find a modulation in the x - y plane of the free surface of the collapsed brush; however, this regime required a simulation much bigger than we could afford if meaningful statistics were to be acquired. The final choice, guided by the above considerations, was a box in the Cartesian frame, in which the brush was created using a 30×30 square lattice at $z = 0$, with lattice spacing of $a = 3\sigma$. 900 chains of length $N = 30$ had their first particle bound to this lattice (immobilized) in the $z = 0$ plane. The rest of this structureless plane was given a repulsive Lennard-Jones potential to keep the rest of the chains restricted to the positive- z direction.

In order to confirm that the $N = 30$ chains of a polymer brush were initially equilibrated in a good solvent, we simulated a single grafted chain of $N = 1000$ particles, relaxing from an initially straight configuration to a random self-avoiding coil. This equilibrium state was confirmed visually and by density measurements for the standard random coil configuration. It is important that commonly used measurements of potential energy relaxation as a function of time are not suitable for judging the equilibration because the potential energy of a chain quickly reaches a very stable plateau for a “crumbled” extended chain conformation, which then takes a very long time to equilibrate into a proper self-avoiding coil, maximizing the entropy of its configuration. After the equilibrium of a long chain was confirmed after 10 million time steps, we used this time for a polymer brush with much shorter chains on a planar surface to ensure ourselves that it was properly equilibrated.

Once an equilibrium of grafted chains was achieved and verified by density measurement, an attractive LJ potential between all particles was switched on (replicating the poor solvent conditions) and the coils collapsed into globular state. However, in the brush with constrained grafted particles, the group of chains was unable to reach its preferred shape (minimizing the surface area of contact with the solvent). This frustration introduced by the grafting constraints is the underlying reason for our findings.

Among other parameters, we monitored the collapse by the average areal density of monomers $\rho(z)$. In order to calculate $\rho(z)$, we first need to determine the number of monomers at a given height, $n(z)$, which is constrained by the condition that an integral $\int_0^\infty n(z) dz$ is equal to the total number of particles, which in our simulations is $900 \times 30 = 27\,000$. We then

normalize $n(z)$ by the maximum number of particles of size σ that could fit in a plane (at any given z), which in our case of the 30×30 grid with the spacing of 3σ is 8100. The function $\rho(z) = n(z)/8100$ is the area density in our simulation, discussed and plotted in Figure 5. We calculated $\rho(z)$ at each time step. The entire box was divided into parallel bins (in the xy plane) of thickness σ along the z -direction. The total number of particles in each bin, determined by the center placement, forms a one-dimensional array $n(z)$. This gives a constant value of $n(z) = 900$ for $z \leq 30$ for the initial straight configuration of chains. For averaging of equilibrium structures, each z -bin was averaged over five brush configurations separated by 500 000 time steps. According to the classical theory of expanded brush,²⁰ in a good solvent the density $\rho(z)$ will have a parabolic profile, which we accurately record in our simulations (see Figure 5). In the dynamic process of collapse we have to present an instantaneous $\rho(z)$ without time-averaging, resulting in a certain noise in corresponding profiles.

Finally, on notation, in the results and discussion below we use the shorthand [ts] for time steps, [kts] to represent “kilo time steps” (i.e., 1000 time steps of simulation), and correspondingly [Mts] stands for “mega” or million time steps.

■ COLLAPSE OF POLYMER BRUSH

In order to simulate the collapse of a polymer brush, the initial linear chains have to be fully equilibrated in conditions that imitate good solvent, which will result in a realistic simulation of collapse—if the chains are not equilibrated in such a way, the collapse will happen by rolling of straight segments into a globular structure, which is not a realistic response. After equilibration, the solvent conditions are rapidly changed to poor—a process known as quenching, which we reproduce by creating the attractive pair potential between all monomers and controlling its depth ε —allowing the coils to collapse in an entangled, irregular manner. This more realistic collapse results in an unexpected highly inhomogeneous structure in the plane, fully resembling spinodal decomposition morphology. These structures were highly stable at equilibrium, and their structural properties, such as the characteristic length scale of the formed collapsed structures, were dependent on the strength (the well-depth ε) of the attractive potential, that is, the depth of quench of the system. We followed the same principle as with verifying equilibration in an extended brush in good solvent. We first recorded the potential energy relaxation of the system until it reached an apparent plateau and then waited for another 26 million time steps for further equilibration (it was only 10 Mts needed for the $N = 1000$ chain to equilibrate into a coil). In contrast to the annealed case of polymer coils, here we have no structural criteria to verify equilibration; in fact, one might argue that in the dense collapsed mesh of mutually attracting chains the full equilibrium is unattainable on any reasonable time scales; although the system is not a glass, the internal mobility must be very low. However, we were certain that neither the morphological features of spinodal decomposition patterns nor the average density profiles have not changed between ~ 50 kts and 26 Mts. Hence, we declare these states equilibrium with our accuracy.

As the polymer brush collapses, we see the initially homogeneous distribution of monomers in the xy plane breaking down and a phenomenon that appears indistinguishable from the classical spinodal decomposition taking place. This clustering of polymer chains depends on the strength of the attractive potential between individual chains of the brush,

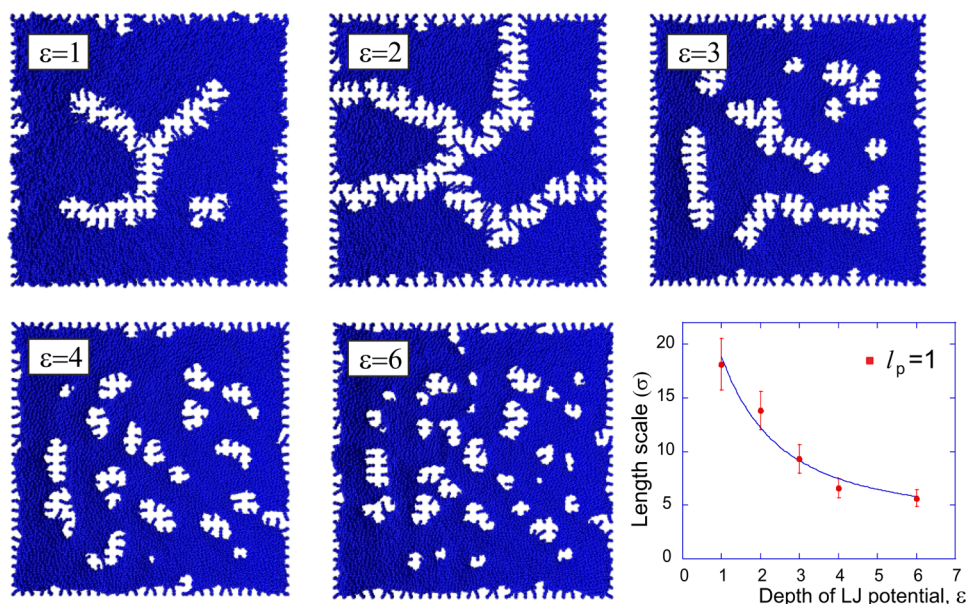


Figure 2. Morphological properties of the collapsed flexible polymer brushes ($l_p = 1$) at varying attractive potential well depths, ϵ , labeled on each panel. The plot of the average characteristic length scale of the spinodal pattern is fitted to the square-root dependence: $\xi \sim 1/(\epsilon - \epsilon^*)^2$.

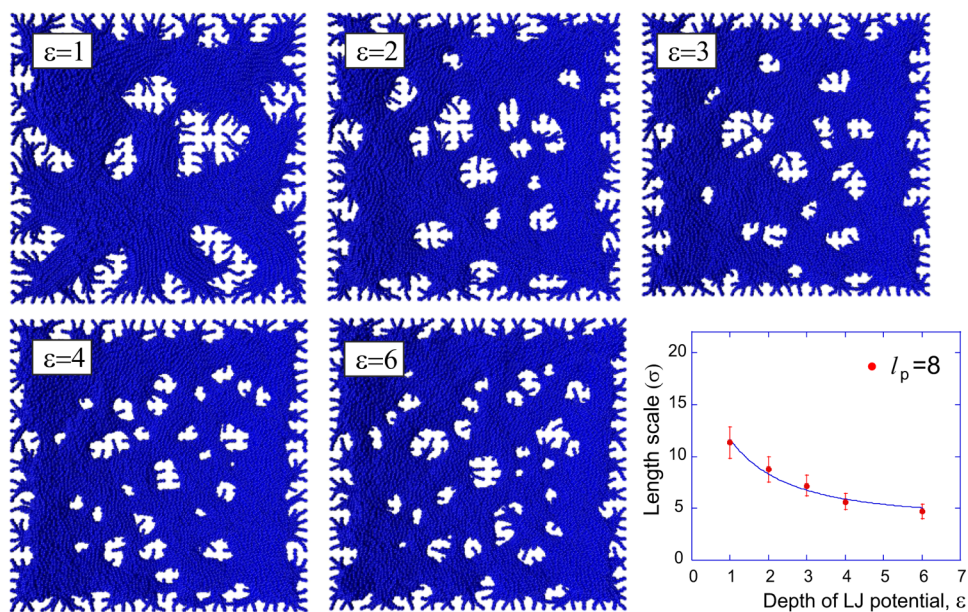


Figure 3. Morphological properties of the collapsed semiflexible polymer brushes ($l_p = 8$) at varying attractive potential well depths, ϵ , labeled on each panel. The plot of the average characteristic length scale of the spinodal pattern is fitted to the square-root dependence: $\xi \sim 1/(\epsilon - \epsilon^*)^2$.

characterized by a nondimensional depth of the LJ attractive potential well ϵ , in $k_B T$ units. In flexible chains, we found distinctive coarsening and large clusters at small potential well depths, and increasingly smaller-sized clusters of polymers as the potential well depth increases, as shown in Figure 2. Although the difference in characteristic length scale of the structure, ξ , is apparent between different panels, it was not easy for us to determine it quantitatively. Because of the relatively small area of the xy map, the Fourier transformation methods (so useful in classical studies of spinodal decomposition, in Cahn–Hilliard model and beyond) were not possible in our case. In the end we have resorted to manually extracting many independent measurements of “thickness” of the dense-polymer regions (a distance perpendicular to both

interfaces) and averaging the result. The final panel in Figure 2 presents such an average characteristic length scale, as a function of increasing strength of the attractive LJ potential, which is reasonably fitted to a square-root scaling dependence $\xi \sim 1/(\epsilon - \epsilon^*)^2$.

For semiflexible brushes with persistence length $l_p = 8\sigma$, there is a similar trend in morphological properties as a function of attractive potential strength ϵ —as the potential increases, the number of chain clusters also increases, and these become smaller in size, as demonstrated in Figure 3. The similar quantitative analysis of the average characteristic length scale of the frozen spinodal pattern follows a similar scaling dependence $\xi \sim 1/(\epsilon - \epsilon^*)^2$ (acknowledging the large errors of its calculation and only a few data points available for the fitting).

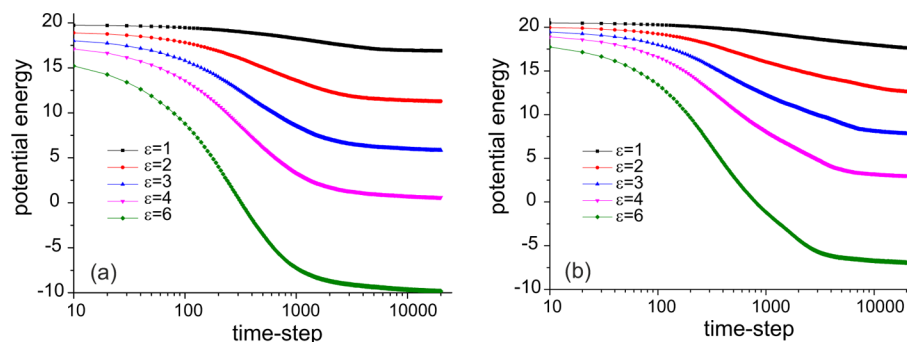


Figure 4. Short-time evolution of the potential energy of polymer brushes as a function of time. (a) Flexible chains, $l_p = 1$; (b) semiflexible chains, $l_p = 8$. Different curves correspond to increasing values of effective attraction measured by ϵ , labeled on plots.

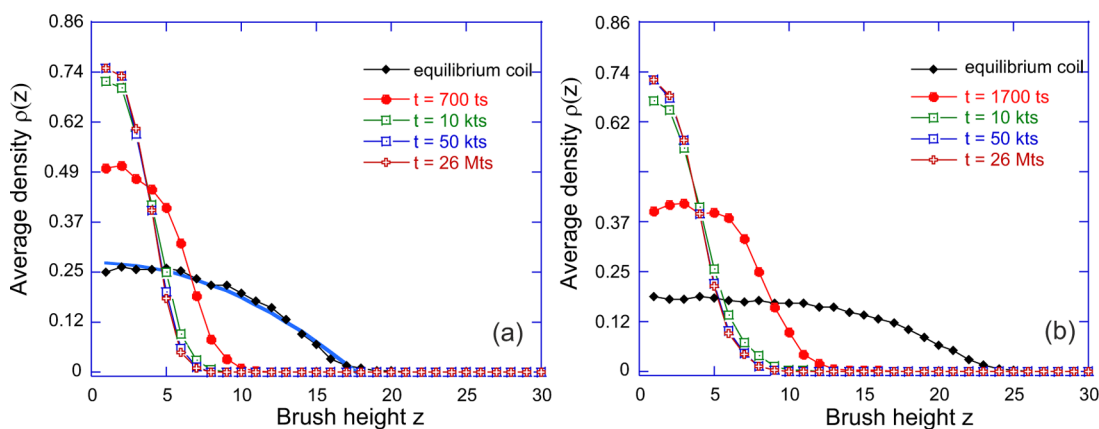


Figure 5. Evolution of density $\rho(z)$, calculated as the average number of monomers in a given xy plane, at various time points of brush collapse at $\epsilon = 6$: (a) flexible chains, $l_p = 1$; (b) semiflexible chains, $l_p = 8$. The initial density profile in good solvent (“equilibrium coil”) for flexible shows a good approximation to the classical parabolic profile,²⁰ fitted with a solid blue line; the corresponding semiflexible chains are much more extended near the grafting plane and only show the expected drop in density from about halfway along the brush height.

Comparing with the flexible brush ($l_p = 1\sigma$), the values of this length are uniformly lower by a constant factor of ~ 1.33 in this case of semiflexible chains.

Figure 4 shows the “early time” relaxation of the potential energy of each brush after the instantaneous quench at $t = 0$ (the increasing quench depth is labeled on the plots). The potential energy experiences a sudden drop at short times, when large gains could be made by all attracting particles coming closer together; the amplitude of this drop is obviously proportional to the depth of the attractive LJ potential well. However, the time of this initial drop is not significantly dependent on the variation of quench depth. After the system becomes compact (the density plots after $t \approx 10$ kts do not have much of the further variation, Figure 5), the approach to equilibrium becomes very slow. This is due to structural changes in chain configurations in the dense state. All structures were equilibrated for 26 million time steps, and for most of this long time the total potential energy of the 900 chains in our brushes did not vary at all.

Figure 5 presents the density profiles of our brushes in different conditions and at different times of their collapse, as always, comparing the flexible and the semiflexible chain cases. We calculate the local monomer density $\rho(z)$ in the same way as done by Murat and Grest.¹⁶ Note that the maximum value our density reaches in the fully collapsed state (closest to the surface, after a long time allowed to self-compact) is $\rho_{\max} \approx 0.74$, which is the fcc dense packing density of monodisperse spheres. The reason that we obtain an essentially 3-dimensional

result for what might seem to be a 2-dimensional (areal) density is because our calculation is fully in 3D and the assignment of a particle to a given z -bin is successful if its center occupies a 3D slice of thickness σ .

The first interesting result is for the flexible brush in good solvent: the density $\rho(z)$ is parabolic to a good approximation, as the fitted line in Figure 5a indicates; therefore, our results are in full compliance with the classical theory of brushes,^{19,20,31} according to which $\rho(z) = w^{-1}(A(h) - Bz^2)$, and the effective potential acting on the chains is $U(z) = -w\rho(z)$, with w the excluded volume parameter and h the brush height. This is in agreement with early MD simulations¹⁶ and neutron scattering experiments.^{17,18} This also confirms that our initial brush is equilibrated in good solvent. In contrast, the brush of semiflexible chains in Figure 5b is much more extended, and its density does not fit a parabolic function in any approximation.

The second fact one can notice from the density $\rho(z)$ evolution on brush collapse is the fact that there is no further change in density past a time $t \sim 50$ kts (compared with the $t = 26$ Mts in the plots). In fact, it may not be easy to distinguish the data symbols corresponding to these two very long times in Figure 5, precisely because there is no discernible change in the density—in spite of the very long time the simulation was allowed to equilibrate after the chains collapsed. Note that this time of “full collapse” is much longer than the time of relaxation of the potential energy of the brush (cf. Figure 4); one has to

assume that the further rearrangements of the microstructure in the dense system are mainly entropy driven.

It is evident from both the potential energy relaxation and the density profile evolution that the time that it takes for a chain to collapse is a function of the attractive potential strength. We declared the polymer brush “collapsed” (and recorded the corresponding time it took) when the density profile $\rho(z)$ has reached the shape that has no longer evolved with time (cf. Figure 5). Hence, we found that the stronger the attractive potential (deeper the quench), the faster this collapse takes place (see Figure 6). The lines in the plot are a guide to

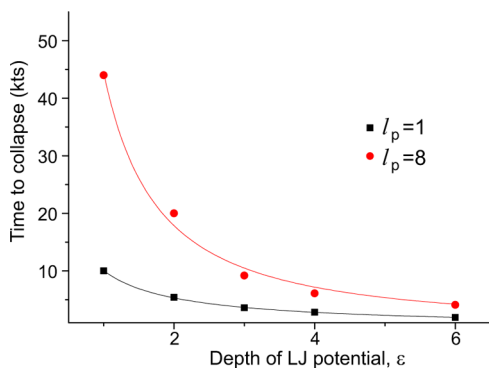


Figure 6. Time to collapse as a function of LJ potential well depth for flexible and semiflexible polymer brushes. The lines are guide to an eye fits with an inverse function $\tau = A/\epsilon$.

an eye fitted dependence of $\tau \sim 1/\epsilon$. At the same time, the semiflexible brush (more extended in good solvent) is much slower to reach the fully collapsed state on the substrate.

DISCUSSION

There is one example in the literature, where a competition between the attractive forces between all chain segments and the constraint of remaining uniformly grafted on a flat surface has been studied theoretically.²⁸ The direct analogy with our simulation work is difficult to establish because the authors there have only consider the so-called directed polymers—the chains never allowed to fold back upon themselves either by the constraint of a fixed height of the brush (the second plane fixing the ends of the chains as well) or by having a very high persistence length. Both of these limits have only marginal correspondence to our system, which is collapsing into a highly folded dense melt (our semiflexible chain case might be the closest to what has been studied in ref 28). Nevertheless, the fundamental physics of a spatial instability developing in the xy plane in order to resolve the mentioned competition has to be the same in both works, which is why we reflect on this comparison.

In essence, the final answer of that theoretical study²⁸ is a prediction that an initially homogeneous areal density $\rho(x,y)$ will develop an instability when the following condition is first met (written in an approximate simplified form, in the limit of the range of the effective attractive LJ interaction less than $(L^3/l_p)^{1/2}$):

$$\epsilon \frac{\sigma^2}{a^2} \geq \frac{q^4}{q^2 - 3 + 4e^{-q^2/2} - e^{-q^2}} \quad (1)$$

where a is the separation of the grafting points in the plane (i.e., $1/a^2$ is the grafting density), and the nondimensional parameter

$q = \mathbf{k}(L^3/l_p)^{1/2}$ is proportional to the Fourier wave vector of the polymer density in the xy plane. The minimum of the universal function on the left-hand side of eq 1 is at $q_0 \approx 2$ (when the function is ~ 10). This means that, on increasing the quenching depth measured by ϵ , the spinodal decomposition instability will first occur with a length scale $\xi_0 \sim 1/q_0 \approx (L^3/l_p)^{1/2}$ when the strength of attraction potential ϵ exceeds a certain critical value (this critical point is $\epsilon^* \sim 10(a/\sigma)^2$ in ref 28). The further increase of ϵ will produce the initially quadratic increase of the wave vector q ; hence, the characteristic length scale we are measuring in Figures 2 and 3 should decrease as $\xi \sim 1/(\epsilon - \epsilon^*)^2$ (which is qualitatively what we saw in Figures 2 and 3).

As mentioned earlier, we cannot hope to achieve any quantitative agreement with the theory:²⁸ in our system the chains can fold into a densely packed state where the extended-chain approximations made to carry out their calculations most certainly fail. Besides, we only examine the final state of the arrested spinodal decomposition—not the initial point of instability as done in ref 28. Nevertheless, we do see that the characteristic length scale of the inhomogeneous structure ξ varies qualitatively the same with increasing the quench depth and also that ξ is smaller in a system with a larger persistence length (Figure 3) which is what the analysis of eq 1 shows. We remind the reader that the dependence on the quenching depth is also in full correspondence with the physics of spinodal decomposition away from the critical point.

To emphasize, we found a spinodal decomposition in a polymer brush after its instantaneous quenching into the poor-solvent conditions. The inhomogeneity forms due to interchain attraction of equilibrated chains competing against the constraint imposed by the grafting density. This constraint prevents the neighboring chains to fully overlap, which would allow particles to interact fully and nonpreferentially with the closest neighboring chains, thus forming a uniform dense layer. The corresponding morphology is arrested (does not coarsen as the classical spinodal decomposition) because the grafting of chains prevents large-scale diffusion. Because these collapsed brushes form a dense and highly inhomogeneous thin layer on the surface, this leads to a critical yet undescribed phenomenon which may have important physical implications in surface and interface science and technology.

We feel that these physical ideas and considerations should initiate a more focused theoretical and simulation effort to establish the laws and the morphology of polymer brushes collapsed in poor solvent—now that we know their density in the plane can be highly nonuniform. We also believe that this analysis can be used to finely tune polymer brushes for experimental purposes to regulate the surface properties of materials. We can see that in some cases one would have to be careful with selecting chain length and grafting to avoid this inhomogeneity, while in other cases it would be a highly desired characteristic of thin films. Such an arrested spinodal decomposition of polymer brushes might be used for design of functional (smart) surfaces in a variety of applications, from solar-cell and wetting-control technology to directed drug-delivery systems, biosensors, and polymer brush modified membranes for protein analysis.

AUTHOR INFORMATION

Corresponding Author

*E-mail: emt1000@cam.ac.uk (E.M.T.).

Notes

The authors declare no competing financial interest.

■ ACKNOWLEDGMENTS

This work was funded by the Osk. Huttunen Foundation (Finland) and the Cambridge Theory of Condensed Matter Grant from EPSRC. Simulations were performed using the Darwin supercomputer of the University of Cambridge High Performance Computing Service provided by Dell Inc. using Strategic Research Infrastructure funding from the Higher Education Funding Council for England.

■ REFERENCES

- (1) Lifshitz, E. M. *Sov. Phys. JETP* **1969**, *28*, 1280–1286.
- (2) Moore, M. J. *Phys. A* **1977**, *10*, 305–314.
- (3) Kholodenko, A. L.; Freed, K. F. *J. Chem. Phys.* **1984**, *80*, 900–911.
- (4) Muthukumar, J.; Nickel, B. G. *J. Chem. Phys.* **1984**, *80*, 5839–5847.
- (5) Des Cloizeaux, J.; Jannink, G. *Polymers in Solution*; Oxford University Press: Oxford, 1990.
- (6) Baumgartner, A.; Muthukumar, J. *J. Chem. Phys.* **1987**, *87*, 3082–3095.
- (7) Kremer, K.; Binder, K. *Comput. Phys. Rep* **1988**, *7*, 259–275.
- (8) Flory, P. J. *J. Chem. Phys.* **1942**, *10*, 51–63.
- (9) Banavar, J. R.; Hoang, T. X. *Phys. Rev. E* **2004**, *70*, 041905.
- (10) de Gennes, P. G. *J. Phys. Lett.* **1985**, *46*, 639–642.
- (11) Halperin, A.; Goldbart, P. M. *Phys. Rev. E* **2000**, *1*, 565–573.
- (12) Lappala, A.; Terentjev, E. M. *Macromolecules* **2013**, *46*, 1239–1247.
- (13) Milner, S. T. *Science* **1991**, *251*, 905–914.
- (14) Netz, R. R.; Andelman, D. *Phys. Rep.* **2003**, *380*, 1–95.
- (15) Ayres, N. *Polym. Chem.* **2010**, *1*, 769–777.
- (16) Murat, M.; Grest, G. S. *Macromolecules* **1989**, *22*, 40549.
- (17) Field, J. B.; Toprakcioglu, C.; Ball, R. C.; Stanley, I. B.; Dai, L.; Barford, W.; Penfold, J.; Smith, G.; Hamilton, W. *Macromolecules* **1992**, *25*, 434.
- (18) Levicky, R.; Koneripalli, N.; Tirrell, M. *Macromolecules* **1998**, *31*, 3731.
- (19) Semenov, A. N. *Sov. Phys. JETP* **1985**, *61*, 733.
- (20) Milner, S. T.; Witten, T. A.; Cates, M. E. *Macromolecules* **1988**, *21*, 2610–2619.
- (21) Skvortsov, A. M.; Pavlushkov, I. V.; Gorbunov, A. A.; Zhulina, E. B.; Borisov, O. V.; Pryamitsyn, V. A. *Polym. Sci.* **1988**, *30*, 1706.
- (22) Rosa, A.; Everaers, R. *PLoS Comput. Biol.* **2008**, *4*, e1000153.
- (23) Plimpton, S. J. *J. Comput. Phys.* **1995**, *117*, 1–19.
- (24) Netz, R. R.; Schick, M. *Macromolecules* **1998**, *31*, 5105.
- (25) Halperin, A. *J. Phys. (Paris)* **1988**, *49*, 547.
- (26) Zhulina, E. B.; Borisov, O. V.; Pryamitsyn, V. A.; Birshtein, T. M. *Macromolecules* **1991**, *24*, 140.
- (27) Auroy, P.; Auvray, L. *Macromolecules* **1992**, *25*, 4134.
- (28) Benetatos, P.; Terentjev, E. M.; Zippelius, A. *Phys. Rev. E* **2013**, *88*, 042601.
- (29) Kremer, K.; Grest, G. S. *J. Chem. Phys.* **1990**, *8*, 5057–5086.
- (30) Auhl, R.; Everaers, R.; Grest, G. S.; Kremer, K.; Plimpton, S. J. *J. Chem. Phys.* **2003**, *119*, 12718–12728.
- (31) Shim, D. F. K.; Cates, M. E. *J. Phys. (Paris)* **1989**, *50*, 3535.